



**Greater Manchester
Diagnostics Network**



DEVELOPING A NORTHWEST REGIONAL POCT SERVICE

Katie Moss

**Programme Director for the Greater Manchester Diagnostic
Networks
Chair of the Northwest Point of Care Testing Strategy Group**



Who you are listening to

Northwest Demographics

Benefits of regional collaboration

Development of Northwest POCT Strategy

Impact of regional collaboration

Next Steps



AGENDA



WHO YOU ARE LISTENING TO



Katie
MOSS

- Programme Director for the Greater Manchester Diagnostic Network
- Previous Specialist Biomedical Scientist (Microbiology)
- Chair of the Northwest Pathology Point of Care Testing Group
- Advocate for women leadership in science
- Strong supporter of leadership which puts the mental health and wellbeing of the team at the forefront of team success!

NORTHWEST OF ENGLAND DEMOGRAPHICS

1

NHS CHESHIRE &
MERSEYSIDE

Over **2.7**
million people.

NHS LANCASHIRE
& SOUTH
CUMBRIA

Nearly **1.8**
million people

3

NHS GREATER
MANCHESTER

Approx **2.8**
million people

2

NORTHWEST OF ENGLAND DEMOGRAPHICS

Cheshire & Merseyside

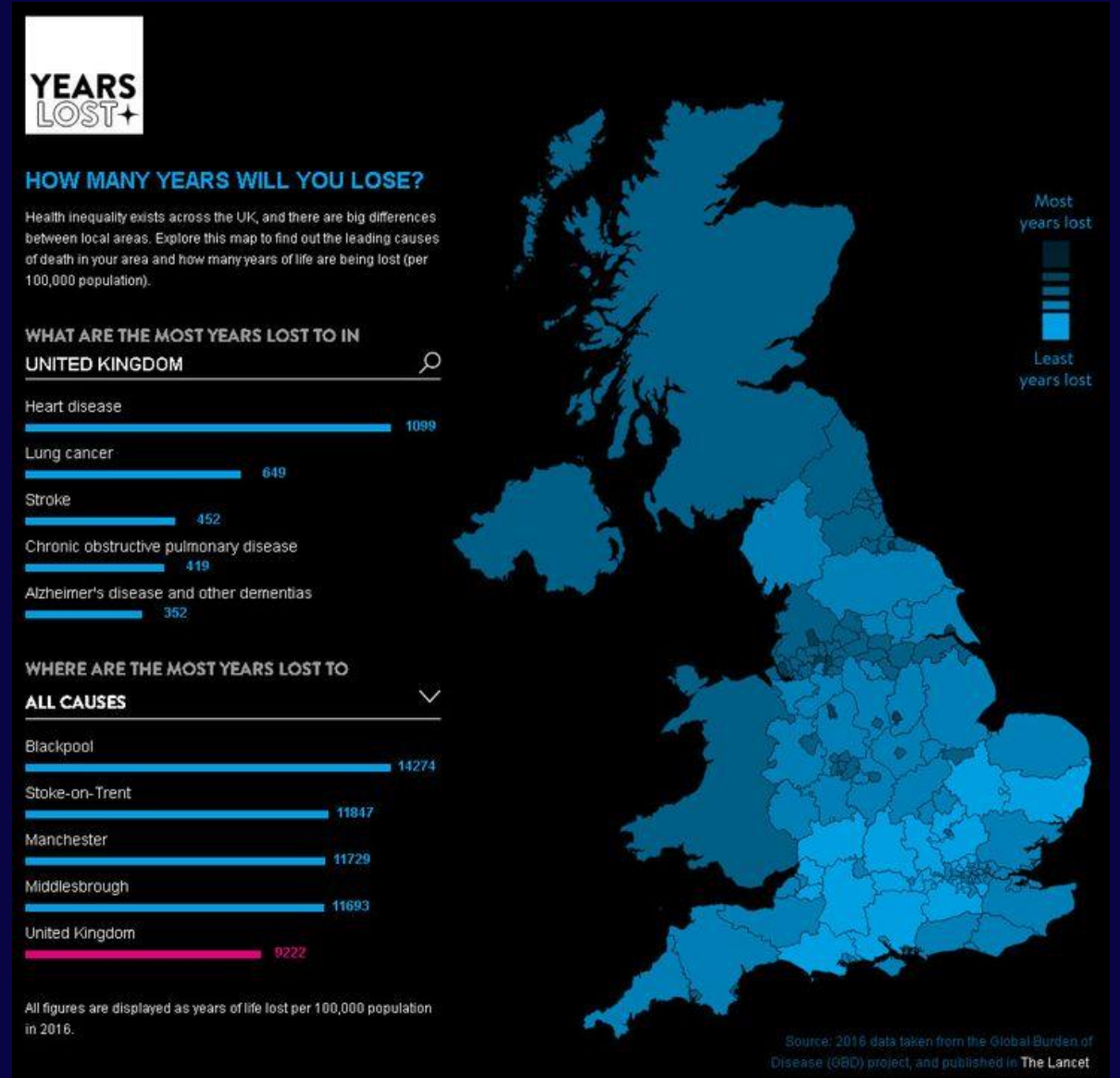
13 sites

Greater Manchester

9 sites

Lancashire & South
Cumbria

6 sites



Acknowledgement to University of East Anglia

TIMELINE

Pathology Maturity Matrix

Release of the National Pathology Network Maturity Matrix

NW POCT WORKSHOP

Regional wide NW POCT Workshop held in October 2023

Nov
2021

Oct
2022

Oct
2023

Nov
2023

NOW

GM POCT SUBGROUP

GM POCT Subgroup established Oct 2022

NW POCT SUBGROUP

Regional wide NW POCT subgroup established in November 2023

ROAD TO POINT OF CARE TESTING NETWORK MATURITY

BENEFITS OF REGIONAL COLLABORATION

1



Maximise existing capacity & access to specialist opinions across the region

2



Economies of scale and reducing duplication of service and effort

3



Wider footprint to increase quality of service and reduce health inequalities

DEVELOPMENT OF THE NORTHWEST POINT OF CARE TESTING STRATEGY



- Common Vision
- Collaborative Relationships
- Actions to fulfil IBMS POCT Framework
- Priority Projects
- Delivery Roadmap

DEVELOPMENT OF THE NORTHWEST POINT OF CARE TESTING STRATEGY

The key goals of Northwest Point of Care Testing Strategy Group as follows:

1. To ensure that POCT is high quality and cost-effective both within the primary and secondary care services
2. To work towards achieving best practice for POCT services by embedding National POCT Framework recommendations
3. To develop a POCT Pathology Network endorsed kitemark which is awarded to sites delivering POCT services
4. To provide consistency of evidence-based test panels at all POCT sites
5. To validate and recommend cost modelling for all POCT services
6. To provide faster turnaround times in test results to support clinical pathways for the benefit of patients
7. To provide a system-wide standardised POCT policy to support implementation and a quality service
8. To work towards connectivity of all POCT devices into the patient health care record

C&M

GM

L&SC

DRAFT

Plan on a Page

Greater Manchester ICS

Point of Care Testing
across Greater
Manchester

How will we measure success?

1. Increase in the number of pathology diagnostic tests performed by POCT devices
2. Increase in the % of results digitally captured in regional wide systems (accessible by all caregivers) – digital maturity.
3. Established of a fully UKAS accredited regional wide POCT service.

Our Vision

To grow the use of Point of Care Diagnostics across Greater Manchester, so patients have rapid access to laboratory quality, real time diagnostic tests and results.



What will we concentrate on to embed the National POCT Framework?

| Quality | Technology | Funding | Digital | Workforce | Procurement |
|---|---|--|---|--|--|
| <ul style="list-style-type: none"> Develop a GM POCT verification process Develop a standardised Internal Quality Control process Establish a standardised suite of GM POCT protocols Develop a GM POCT Network Kitemark to provide quality endorsed practice | <ul style="list-style-type: none"> Work with Health Innovation Manchester to understand available market ready POCT equipment for deployment | <ul style="list-style-type: none"> Develop a GM POCT testing guide /Costing Model Develop cost model to predict system wide financial efficiencies associated with POCT decentralisation | <ul style="list-style-type: none"> Develop full IT connectivity with all new LIMS instances Assess which AI assisted reading devices should be recommended by network group | <ul style="list-style-type: none"> Develop new multiskilled POCT roles which can provide end to end diagnostics from sample collection to reporting. Develop a competency and training framework as part of the POCT Kitemark scheme | <ul style="list-style-type: none"> Work with ICB to ensure that POCT procurement is undertaken through a network approach |



What needs to be implemented or Enabled?

Understanding Current Position

- Stocktake of all POCT devices within primary and secondary care services
- Understand location and service provision for each Acute Respiratory Hub

Governance & Control

- Appropriate governance processes and infrastructure
- Agreement on procurement rules for GM ICS

System Interoperability

- Influence the GM LIMS programme to ensure that POCT devices have the functionality and interoperability required
- Seek IT representation for the GM POCT network group
- Develop IT POCT Strategy from the data gathering exercise

Education & Engagement

- Actively seek to improve knowledge and understanding of POCT services across ICS functions
- Identify local POCT champions within primary care services

Funding

- Work with GM ICB Finance team to understand could be network wide POCT services could funded.
- Review current pathology and phlebotomy service contract arrangements with GM ICB contract teams

Priority 1

UNDERSTAND
CURRENT POSITION

Priority 2

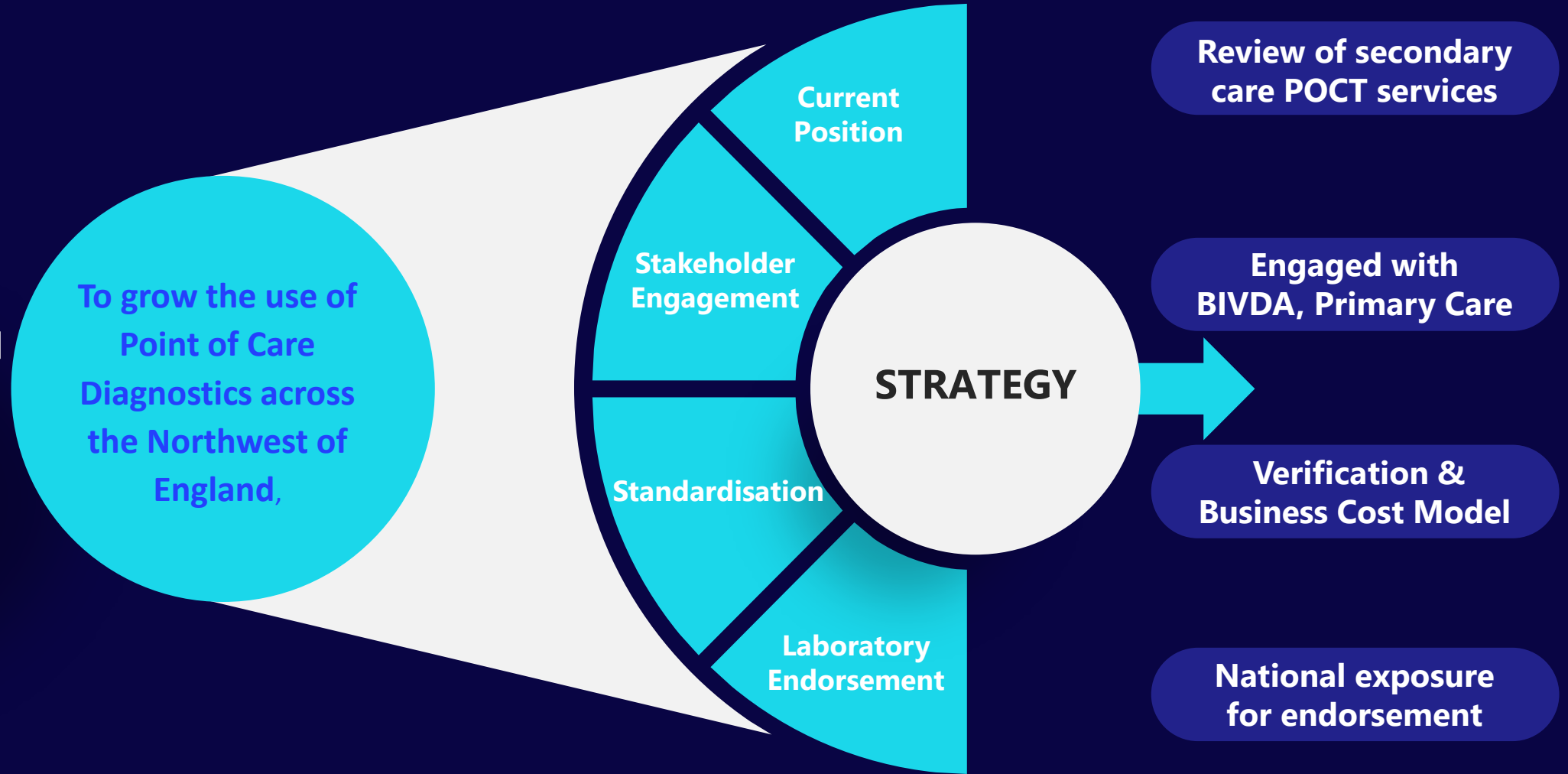
ENGAGE WITH STAKEHOLDERS
FOR GRIP & CONTROL

Priority 3

STANDARDISATION OF
PROTOCOLS, VERIFICATION &
COST MODELLING

STRATEGY APPLICATION

- Understand our current position
- Engage with stakeholders to provide grip and control
- Standardisation
- Laboratory Endorsement Kitemark



GM POCT SUBGROUP DELIVERABLES TO DATE

Benchmarking – different sizes, same challenges

- Governance structure
- Staff/roles/bands
- Tests
- Connectivity
- Procurement/MSc
- Primary care, community survey

CDC

- Visit to Oldham CDC
- Collaboration with CDC lead
- POCT posts - 2 CDCs
- Funded from Tariffs – eGFR, NTPro BNP etc

Procurement

- Review of GM POCT asset register
- MSc opportunities

Harmonisation/standardisation – training

- Blood glucose monitoring competency assessment template
- E learning presentations – sharing best practice
- Plan for GM POCT training competency passport

T&F groups

- GM POCT Validation SOP
- POCT cost model
- GMCR (Greater Manchester Care Record)

GM Plan on a page

North West POCT Workshop

POCT data flow in GM – IT, connectivity

- Survey

Risks

Product supply alerts

- Hologic FFN

Workforce

- Workforce development presentation
- POCT Career pathways

Innovation

- Genetic POCT
Genedrive POCT tests for genetic variant to guide antibiotic use in babies
- POCT for ARI hubs, AMS

North West POCT group

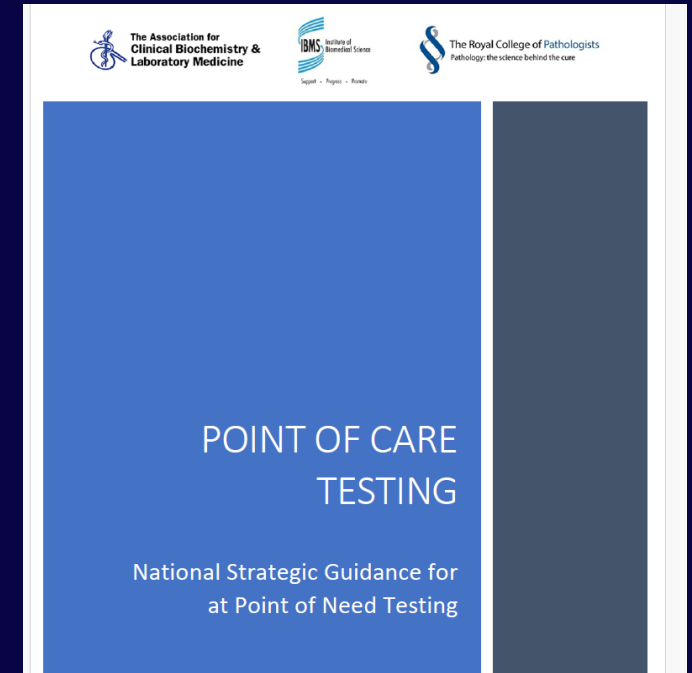
- Collaboration



GM POCT COST MODEL SUBGROUP

Sharman Harris (Stockport) / Patrick Howorth (NCA)

- In line with National Guidance 2023 Joint paper
- POCT Implementation costs
- POCT Ongoing costs
- Standardised approach to costs included / listed in GM
- Challenges
 - Different structures and sizes of POCT teams
 - Cross charging, budget transfer
 - Services with large numbers of POCT devices - blocks
 - Community/Primary Care – additional costs e.g mileage



Impact of Regional Collaboration

- Live pilot in progress – The use of POCT in Acute Respiratory Hubs (ARI)
- National ask from the National Diagnostics Transformation Programme to conduct a service evaluation of POCT devices in ARI hubs
- Northwest Point of Care Testing Strategy Group agreed to lead

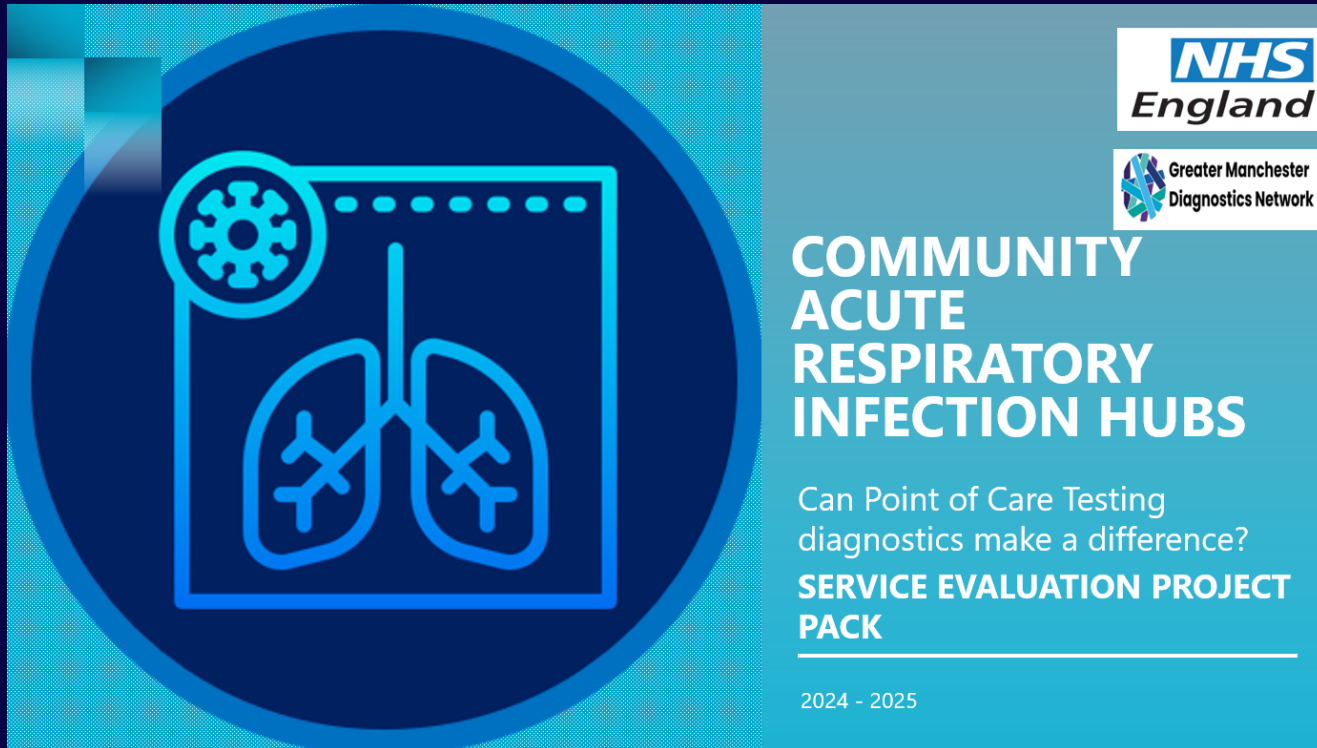


| Activity | Lead | Week commencing | | | | |
|---|--------------------------|-----------------|--------|--------|--------|--------|
| | | 13-Nov | 20-Nov | 27-Nov | 04-Dec | 11-Dec |
| Hubs determine the extent of the service evaluation they can undertake, ideally prioritising the use of +/- CRP and +/- RSV | Hubs | █ | | | | |
| Data collection systems established | Hubs and Research Groups | █ | █ | | | |
| Data collection proforma developed / data sharing agreements in place | Research Group | | █ | █ | █ | |
| POCT tests sourced / procurement guidance provided | Industry | | █ | █ | █ | |
| Pilots commence | All | | | | | █ |

It is anticipated that the pilots will run until the end of January or February, depending on acute respiratory infection incidence levels.

Impact of Regional Collaboration

Northwest POCT in ARI Hub Service Evaluation

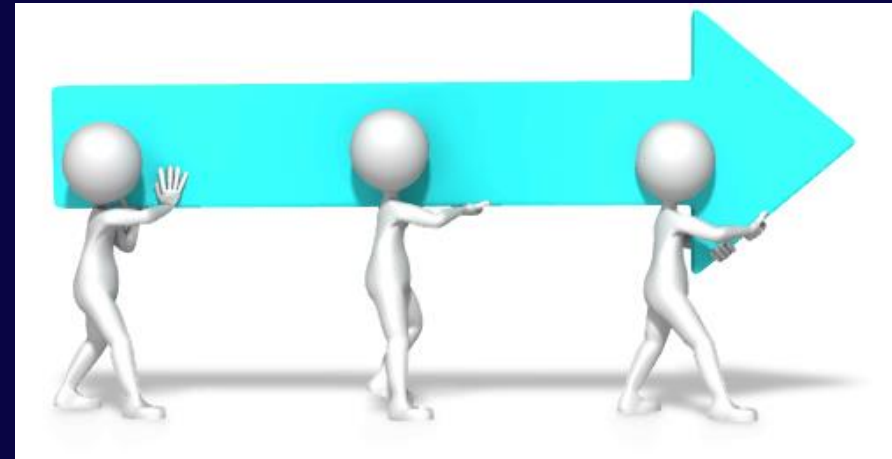


To conduct a service evaluation of POCT devices to understand the role that POCT testing can play in the clinical management of patients with acute respiratory infections and develop different models of implementation of POCT testing tailored to different practices and sites.

Impact of Regional Collaboration

Northwest POCT in ARI Hub Service Evaluation

"It's all about the operational model"



How do we sustain POCT in primary Care and out of hospital settings?

Which staff are crucial to the successful deployment?

How do we ensure that a quality service is being delivered?

Will a NW endorsed model provide greater power in adoption?

Impact of Regional Collaboration

Northwest POCT in ARI Hub Service Evaluation

NHS England Regional Team



PAULA COWEN,
NW Regional Medical
Director for Primary
Care



HELEN LIGGETT,
NW Regional Healthcare
Science Lead

NHS Greater Manchester Team



KATIE MOSS,
GM Diagnostics
Network Programme
Director



SHARMAN HARRIS,
Consultant Clinical
Biochemist & Clinical
Lead for GM POCT
Group



RAJA MURUGESAN,
Clinical Lead in Primary
Care for Respiratory
Medicine

NHS Lancs & South Cumbria Team



MARTIN MYERS,
Consultant Clinical
Biochemist & Clinical
Lead GIRFT



**PROF. ANTHONY
ROWBOTTOM,**
Clinical Director

Impact of Regional Collaboration

Northwest POCT in ARI Hub Service Evaluation

The team,
Primary care sites,
POCT Devices and Kit

what we don't have is.....

Watch this space !



Impact of Regional Collaboration

The Public Value of Point of Care Testing



The Public Value of Point of Care Testing

Survey concept and content

Rick Wylie 4th July 2024

Where opportunity creates success

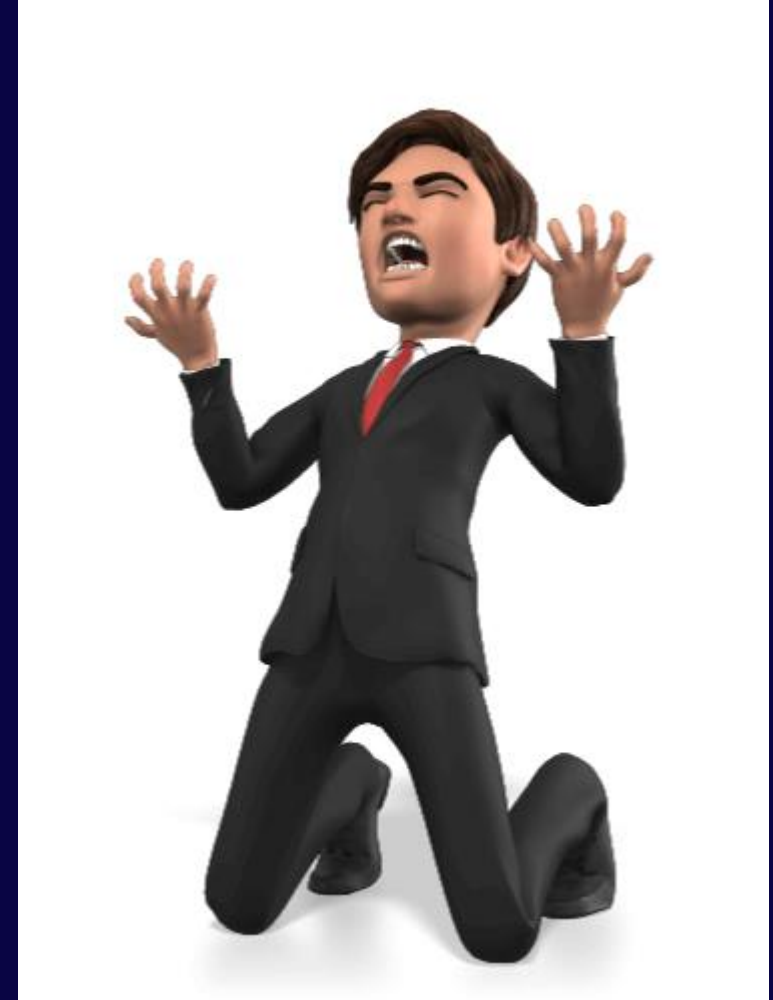
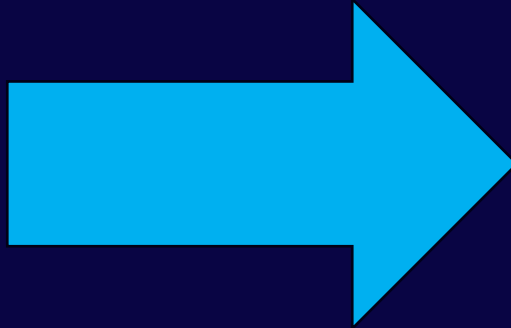


What does a public value profile mean?

How will this support our pilot?

Impact of Regional Collaboration

The Challenges.....



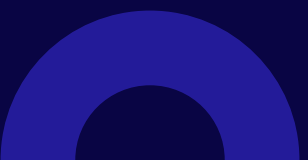
Impact of Regional Collaboration

The Challenges.....





NEXT STEPS

- Complete the POCT ARI Hub Pilot
 - Identify other services which would benefit from POCT testing
 - More coordinated NW pilots
 - Increasing membership of the group
 - Explore how POCT could be adopted within Physiological Sciences
- 



**Greater Manchester
Diagnostics Network**

Thank you for listening